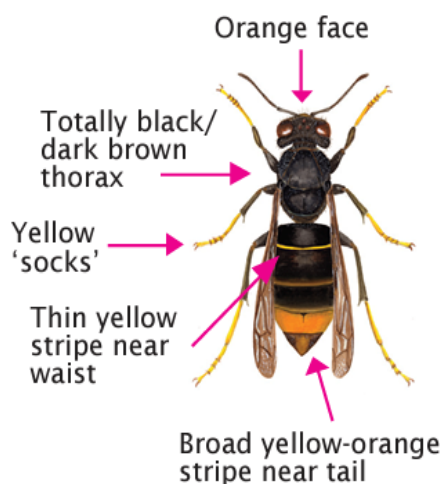




WOKINGHAM & DISTRICT BEEKEEPERS ASSOCIATION

Helping honeybees & beekeepers since 1946



Asian hornet



Native hornet
(*Vespa crabro*)

Illustrations by Sarah Bunker

IDENTIFICATION

The yellow-legged Asian hornet (left) is smaller than our native European hornet (*Vespa crabro*, right). The Asian hornet is up to 25 mm for a worker and up to 30 mm for a queen. The best way to report an Asian hornet is by using the app: 'Asian Hornet Watch'. Use the QR codes below to download from the respective App stores:



Or you can send photos and location details to: alertnonnative@ceh.ac.uk